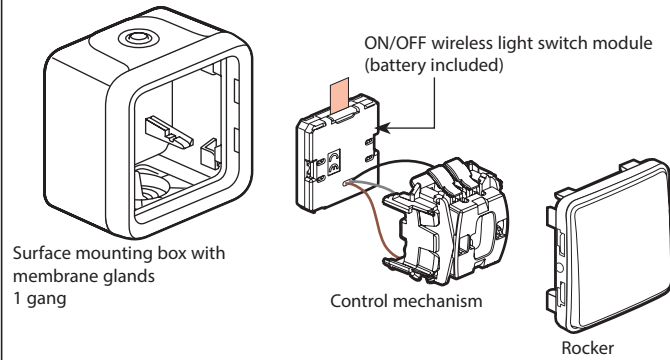


This pack is a connected accessory which **requires** you to buy and install the connected starter pack and «... with Netatmo» connected power outlets, switches and/or connected lighting micromodules first.

⚠ This product controls only «... with Netatmo» connected switches (with dimmer option), lighting micromodules and power outlets + cable outlets.

Pack contents



Frequency bands : 2,4 - 2,4835 Ghz
Power level : < 100 mW
Usage temperature : +5°C - +45°C

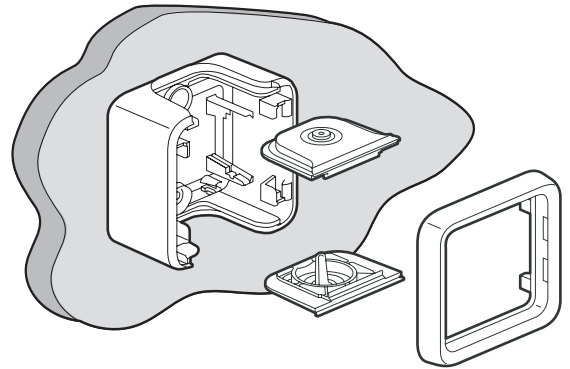


www.legrand.fr

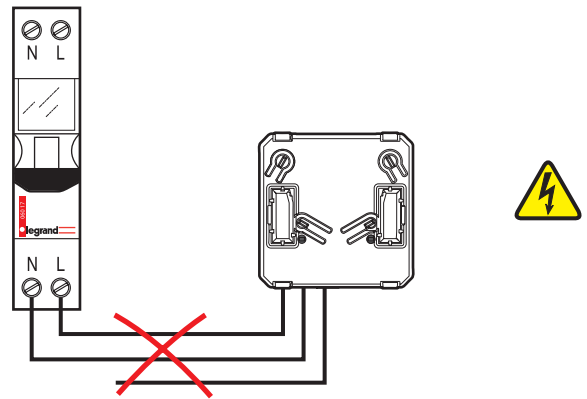
LEGRAND - Pro and Consumer Service - BP 30076
87002 LIMOGES CEDEX FRANCE • www.legrand.com

LE11737AA

1 Fix the box on the wall, then install the membrane glands and the cover plate



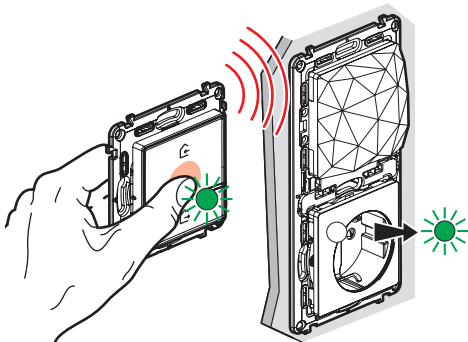
⚠ Do not power the product. Dry contact only.



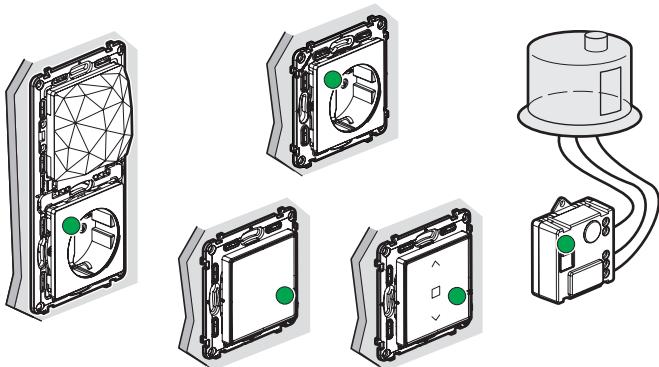
2

2 Start to configure the installed products:

1 Take the Home/Away wireless switch near to the gateway power outlet Control and press the middle of the wireless switch until its light briefly turns green, and then stop pressing.

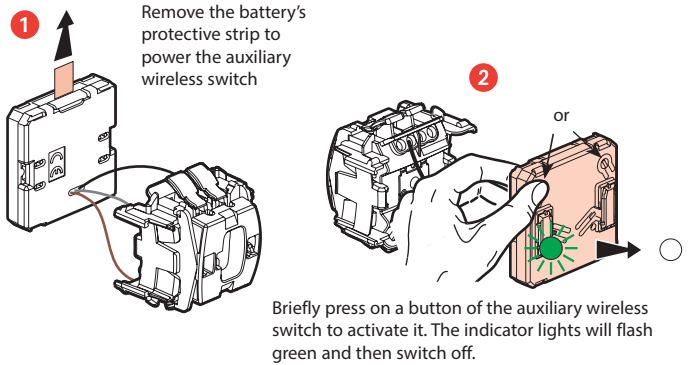


2 The indicator lights on the products which you have wired will turn green one by one.



3

3 Prepare the auxiliary wireless switch

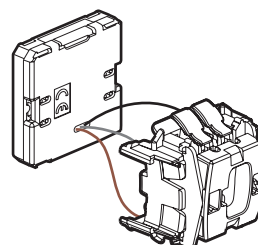


Do not install the auxiliary wireless switch in its box. The installation will be completed in steps 6 & 7.

4 Pair the auxiliary wireless switch

⚠ Make sure that the indicator lights on the wired products are green and not flashing. If not, go back to step 1.

1 How to pair an auxiliary wireless switch ?



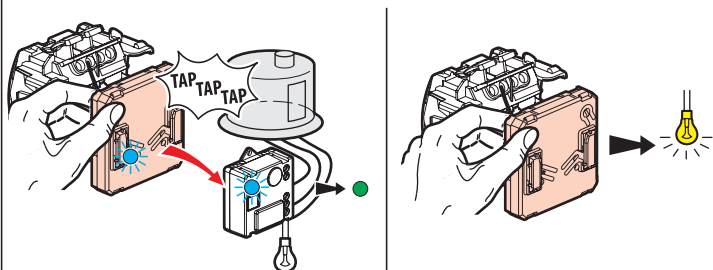
⚠ This product controls only switches, lighting micromodules, cable outlets and power outlets «... with Netatmo».

⚠ You can control only one light or appliance with the auxiliary wireless switch.

4

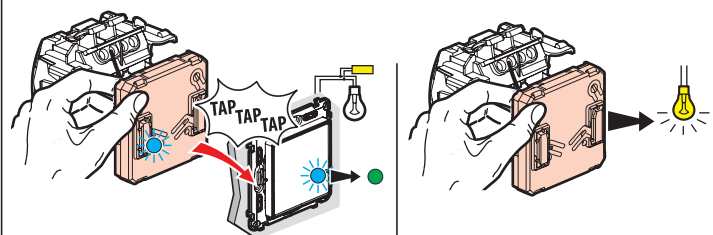
④ Pair the auxiliary wireless switch (cont.)

② To pair an auxiliary wireless switch with a connected lighting micromodule.



- Ⓐ Press on the auxiliary wireless switch you wish to pair, while tapping it three times onto the light switch you wish to control.
- Ⓑ The indicator lights on the two products will flash blue rapidly.
- Ⓒ The indicator lights on the two products will briefly turn blue and flash, and then the light on the wired product will turn green again and the light on the wireless switch will switch off. The pairing was successful.

③ To pair an auxiliary wireless switch with a connected light switch.

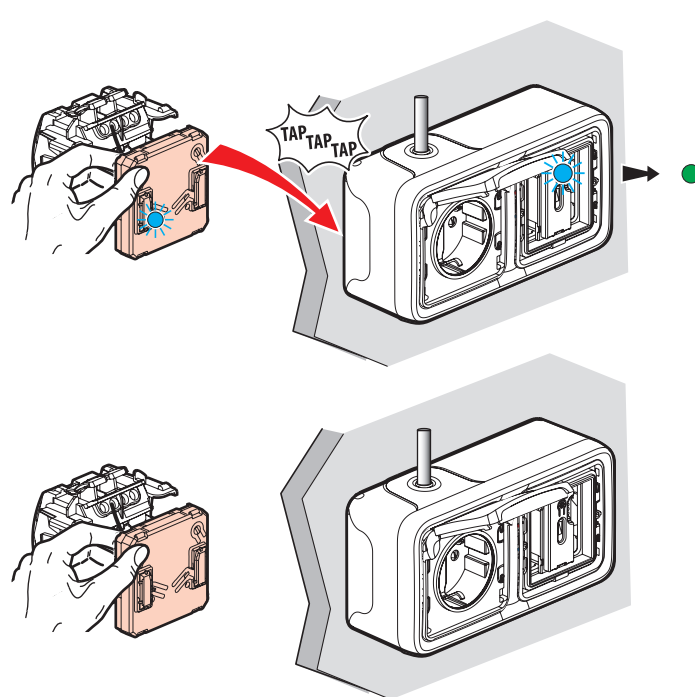


- Ⓐ Press on the auxiliary wireless switch you wish to pair, while tapping it three times onto the light switch you wish to control.
- Ⓑ The indicator lights on the two products will flash blue rapidly.
- Ⓒ The indicator lights on the two products will briefly turn blue and flash, and then the light on the wired product will turn green again and the light on the wireless switch will switch off. The pairing was successful.

5

④ Pair the auxiliary wireless switch (cont.)

④ To pair an auxiliary wireless switch with a connected power outlet.

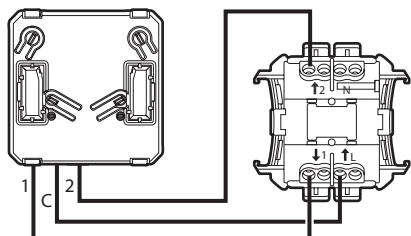
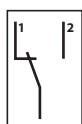


- Ⓐ Press on the auxiliary wireless switch you wish to pair, while tapping it three times onto the light switch you wish to control.
- Ⓑ The indicator lights on the two products will flash blue rapidly.
- Ⓒ The indicator lights on the two products will briefly turn blue and flash, and then the light on the wired product will turn green again and the light on the wireless switch will switch off. The pairing was successful.

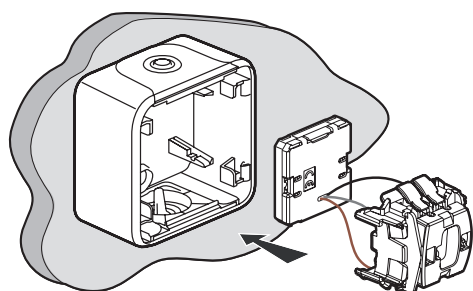
6

⑤ Wiring instructions

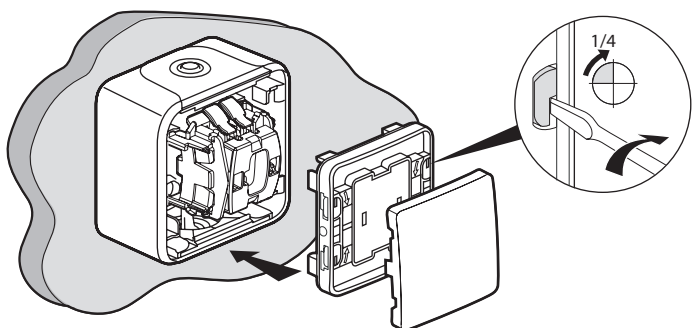
Switch mode



⑥ Install the assembly of the auxiliary wireless switch and the control mechanism in the box.



⑦ Install the rocker

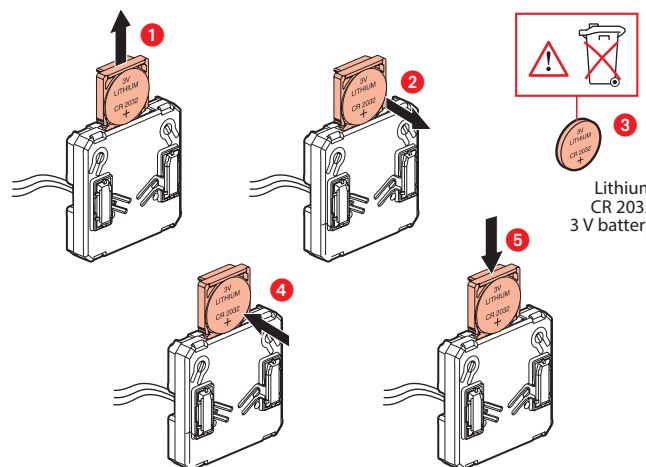


7

To pair the wireless control for lights and electrical devices with your connected installation, you should follow the instructions:

- in the **user guide in your connected starter pack**
- in the **Legrand Home + Control application (Settings/Add a new product section)**
- or consult the user manual on **legrand.fr**

Replacing the battery



SIMPLIFIED EU DECLARATION OF CONFORMITY

The undersigned,
Legrand

declares that the radio-electric equipment referred to in these instructions complies with directive 2014/53/EU.

The full text of the EU declaration of conformity is available on the following website :

www.legrandoc.com